

Water Injection & Disposal Systems

HPP-Plunger Series

CONFIGURABLE, ROBUST, AND SAFE

A PLUNGER PUMP SYSTEM FOR WATER INJECTION

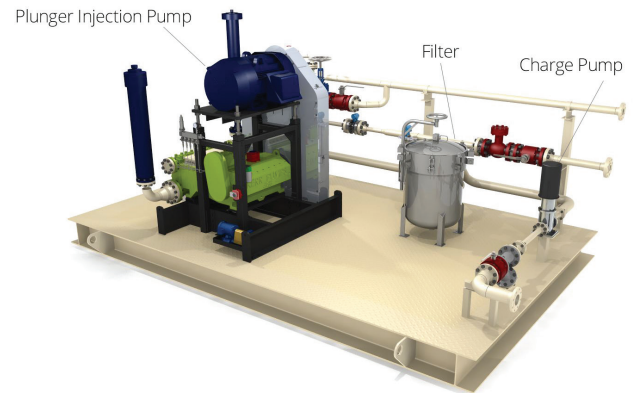
This simple and compact system optimizes installation and operating costs. It's designed and built within Westpower's Standard Systems Program, so your configuration is delivered quickly and efficiently **providing a pumping solution at the lowest total cost of ownership.**

Off-the-shelf solutions, built to meet tight schedules and budgets

Delivered to your site sooner. Westpower has done the engineering and optimization up front – just pick a configuration, get drawings and fabricate faster.

KEY TECHNOLOGY BENEFITS

- High efficiency and robust
- Adaptable to changing well conditions
- Compact size with top-mount design
- Multiple fluid end material options
- Leak detection system available
- Good for polymer injection (no shearing action)



PROGRAM BENEFITS



Fit-for-purpose design



Quick engineering turnaround and drawings



Configurable and scalable



Fully portable, for low transportation costs

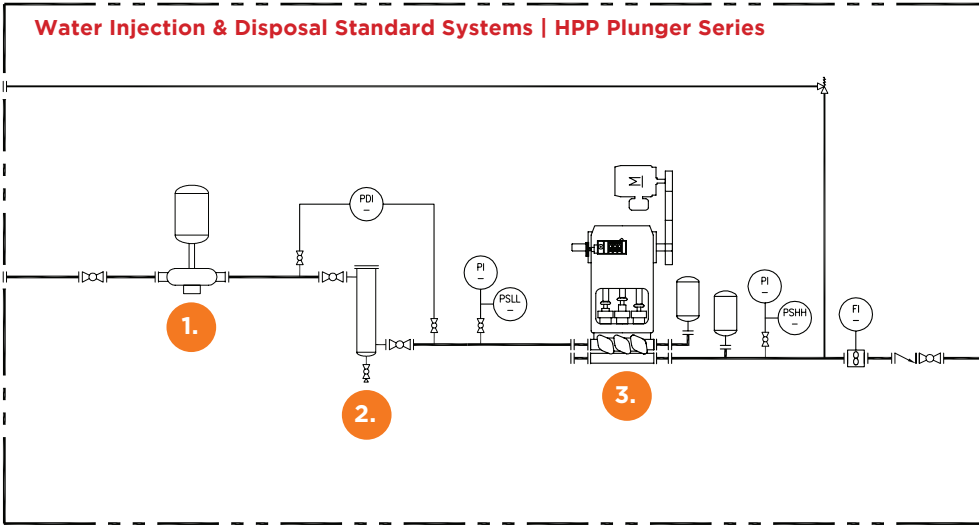


Local field service and technical support

RECIPROCATING PLUNGER PUMPS

Plunger pumps are well known and very mature technology, and have proven to be one of the most forgiving and efficient pumps for the application of high pressure water injection.

Water Injection & Disposal Standard Systems | HPP Plunger Series



THE SYSTEM

- 1. Charge/Booster Pump**
- 2. Filtration**
Strainer and filter optimized for total cost of ownership and longer change out intervals
- 3. Plunger Injection Pump**
Robust and efficient
- 4. Options**
Standard upgrades available

OUR PRE-ENGINEERED SYSTEM INCLUDES



API 674 Multiplex Reciprocating Plunger Pump



ANSI B73.1 Centrifugal Charge Pump in CD4Mu (Duplex SS)



Designed for a range of flow rates and pressures; sweet or sour



Pre-designed unit with configurable options



Electrical integration; optional VFD with plug & play control system



Layout and enclosure options

PERFORMANCE OVERVIEW

SERVICE

Fresh or produced water; sweet or sour

FLOW RATE

Single train up to 45 m³/hr (198 gpm)

DISCHARGE PRESSURE

Up to 20,684 kPag (3000 psig)

CERTIFICATIONS & QUALIFICATIONS

• COR • ISN • CQN • ComplyWorks • PICS/Avetta

• APEGA • ASME Section IX • ABSA accredited QMS
• ASME B31.1, B31.3 • CWB certified to CSA standard W47.1



realize your system potential

CONTACT US FOR EXPERT INSIGHTS

CALGARY/ HEAD OFFICE
4451 54 Avenue S.E.
Calgary, AB T2C 2A2
403.720.3300

CALGARY/ FABRICATION CENTER
5715 35 Street S.E.
Calgary, AB T2C 2H1
403.720.3300